



# Vector™ & Scorpion™

---

The ultimate 2-in-1 ISR system

# The ultimate 2-in-1 ISR system

---

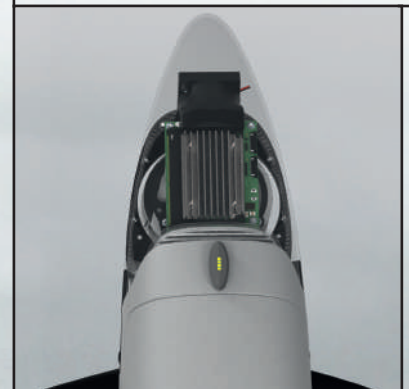


## Vector eVTOL fixed-wing sUAS

Autonomous Group 1 sUAS designed for mobile disconnected military and security operations. Vertical take-off and landing in confined areas.

Equipped with AES-256 encrypted mesh network radio, tactical hand controller and laptop (optional).

Wingspan	2.8 m   9.2 ft
Weight	< 8.5 kg
Wind	14 m/s   27 kn



## Advantages of the 2-in-1 system

---

- |                              |                                      |
|------------------------------|--------------------------------------|
| ■ Max. Efficacy              | ■ Max. launch altitude 3000 m MSL    |
| ■ Anti block airspeed sensor | ■ Max. operating altitude 4500 m MSL |
| ■ Easy to use                |                                      |

The 2-in-1 system comprising Vector™ and Scorpion™ shares a common main fuselage, ground controller, data link, sensors, and AI capabilities.

# IP54      Low audio and visual footprint



## Scorpion Multicopter sUAS

Multicopter variant of Vector sUAS ISR platform that uses the same center fuselage to enable quick change between the two platforms. Scorpion excels in providing persistent surveillance in confined urban environments with the ability to hover in place. The gimbaled sensors, encrypted data link and control link remain.

Wingspan	1.37 m   4.5 ft
Weight	< 8.0 kg
Wind	10 m/s   19.4 kn

## AI board

Onboard AI Processing  
with NVIDIA Jetson Orin



## Smart Battery

- Self heating
- Self monitoring
- Adaptable to aviation regulation



3h



2h

## Multicharger



Rugged simultaneous charging and discharging of all operating system.

One person  
set-up

No tools  
needed

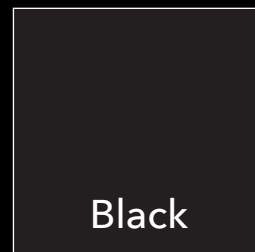
Easy to  
carry

- Tactical Backpack carrying case
- Fast deployment - less than 3 mins

## Backpack



Multicam



Black

Compact portable carrying for the whole tactical deployment system.

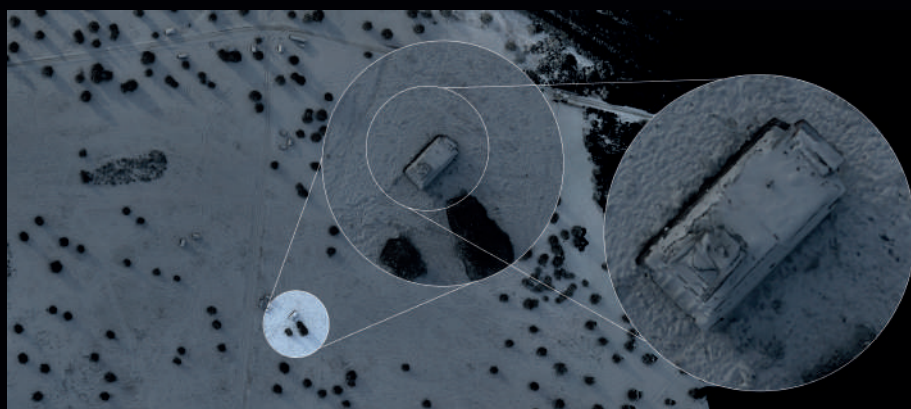


# Gimbaled Sensors



## Raptor

- **IR 1280 x 720 px**  
8x Digital  
LWIR uncooled 8 - 14  $\mu$ m  
17.5° W.FOV - 2.2° D.FOV
- **EO 1280 x 720 px**  
40x Optical  
2x Digital  
60° WFOV - 1.5° NFOV -  
0.75° DFOV
- **Image Stabilization**
- **+45° to 135° tilt**
- **Laser option**



## Visible Channel

### Person

Detect  10 km

Recognize  6 km

Identify  3 km

### Vehicle

Detect  40 km

Recognize  10 km

Identify  6 km

## Thermal Channel

### Person

Detect  4.5 km

Recognize  1.3 km

Identify  0.6 km

### Vehicle

Detect  6 km

Recognize  1.6 km

Identify  0.8 km



# Datalink



## Technical Specifications

### Datalinks

- Encrypted AES256
- Latency 7 ms average
- In motion usability
- MIMO Beamforming Technology

## Handheld



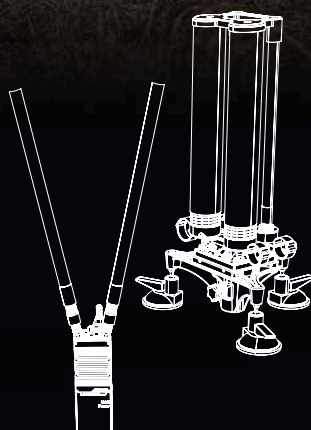
**Battery**  
12 hours



**Rugged**  
IP 68



**C2 & Video Range**  
15 km



## Stationary



**Battery**  
12 hours



**Rugged**  
IP 68



**C2 & Video Range**  
35 km





# Ground Control System



## Interoperability

- MISB ST 0902 (STANAG 4609) compatible live video stream with KLV Metadata
- Combat Management system (ATAK, Sitaware, Telepak)
- CursorOnTarget (COT) protocol
- C4IS capable
- Extreme plug in architecture

## Skynav



Touch-Display  
7"



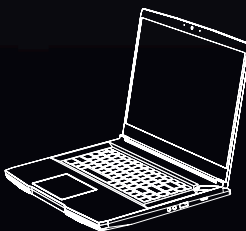
Hot  
swappable



Battery  
8 hours



Rugged  
IP 65



## Toughbook



Touch-Display  
14"



Hot  
swappable



Battery  
up to 38 hours



Rugged  
IP 53



# Mission Control Software

Vector can be operated using QBase Tactical or Auterion Mission Control.

## QBase Tactical

- Intuitive workflow
- Real-time reconnaissance
- Inflight changes
- Target tracking
- GeoLock

GNSS & Link Loss capabilities

Real-time automated  
system monitoring

Awareness



Sensor switch and  
sensor fusion

Waypoint  
mission

POI



# Add-Ons

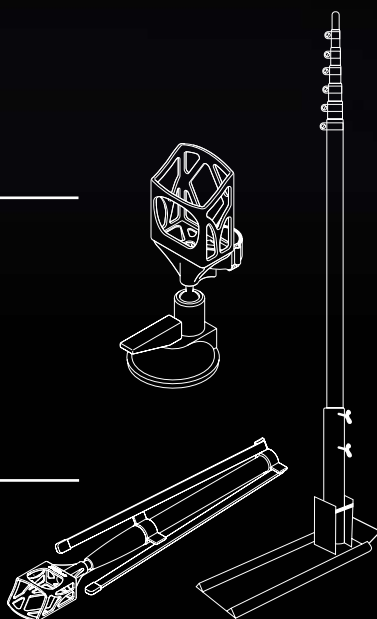
## Mount

- Attachable on every flat surface



## Tripod

- Up to 2.20 m
- Packable
- Tactical & lightweight solution



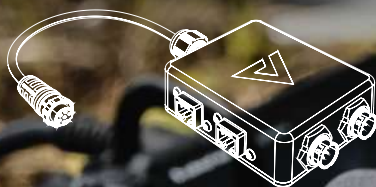
## Mast

- Up to 6 m
- Maximum range increase
- Rugged & fast deployment



## Datalink Switch

- Multiple GCS simultaneously
- Portable and rugged
- Safest transmission due to cable connection



## Data Extension Cable

↔ Connection  
12 m

